



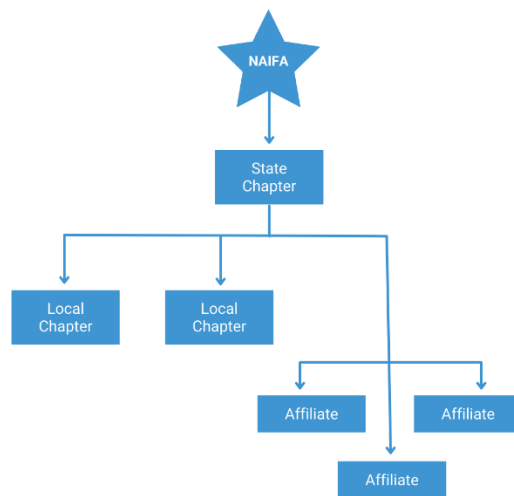
## Local and Affiliate Designation for Members - How it Works!

### What is a Local Chapter?

A Local Chapter provides members in population centers large enough to support a formal Chapter structure with access to frequent and structured programming. The minimum size of a Local Chapter is 100 members. The Local Chapter is separately incorporated, maintains association management and governance, holds meetings for professional development and education, social/networking, and grassroots political advocacy at least four times per year. A Local Chapter is accountable to both its State Chapter and NAIFA.

### What is an Affiliate?

An Affiliate is a geographical area of counties within a reasonable distance of travel to facilitate local programming and engagement for the benefit of NAIFA members under the leadership of the State Chapter.



### How do members become a part of a Local Chapter or Affiliate?

When a member joins NAIFA, there will not be an option to join a Local Chapter or Affiliate. Once a member joins, a NAIFA staff member will manually look up their zip code (or county in the case of an Affiliate) from the address they provided. If their zip code/county is assigned to a Local Chapter or Affiliate, they will be added to the appropriate group.

**What if a member wants to choose their Local Chapter or Affiliate?**

If a member would like to be a part of a Local Chapter or Affiliate (or a different Local Chapter or Affiliate than what they are assigned to), the member must contact NAIFA and request this change be made. The member may call 877-866-2432 or email [info@naifa.org](mailto:info@naifa.org).

**Where can I get more information?**

The [Chapter Playbook](#) includes additional details on Local Chapters and Affiliates, including position descriptions. If you have any further questions or concerns, please reach out to [leadership@naifa.org](mailto:leadership@naifa.org).